

大功率电感 GDSPLS 系列

High power inductor GDSPLS series

特征 FEATURES

- ◆ 磁屏蔽结构
- ◆ 大电流、低 DCR
- ◆ 复合结构、选材灵活
- ◆ 超低嗡嗡声噪音
- ◆ 在不饱和的情况下处理高瞬态电流峰值

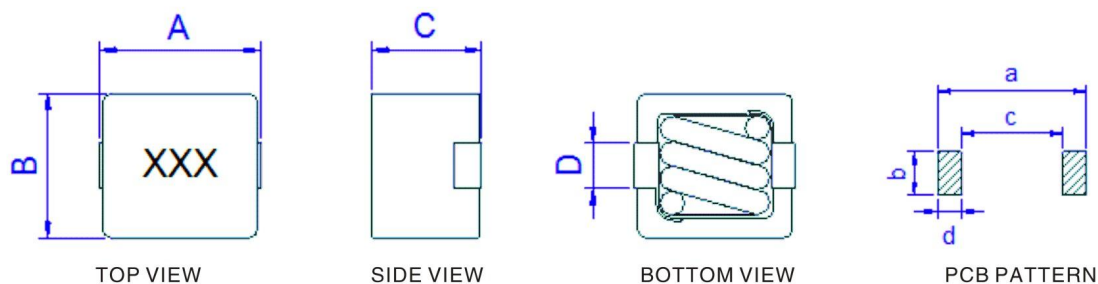


用途 APPLICATIONS

- ◆ 非常适用于电源线 DC-DC 转换应用，尤其适用于电源开关、个人电脑、工业电脑和其他大电流 DC 输出设计。

外观尺寸 Extrenal Dimension

注：XXX 表示印字



Unit: mm

Series	A	B	C	D	a	b	c	d	Material
GDSPLS 0806MN	8.7max	8.2max	7.2max	2.5max	9.2	3.0	4.4	2.3	Ferrite
GDSPLS 0807MN	8.8max	8.4max	7.5max	2.5max	9.2	3.0	4.4	2.3	Ferrite
GDSPLS 1009MN	11.3max	10.4max	9.7max	3.2max	11.3	3.6	6.9	2.2	Ferrite
GDSPLS 1210MN	12.3max	11.7max	10.0max	3.7max	12.8	5.4	7.0	2.9	Ferrite

规格命名 SPECIFICATION NAMED

GDSPLS 0806 MN - 1R0 M

① ② ③ ④ ⑤

- ① 产品系列 Product Symbol
- ② 产品尺寸 Dimensions
- ③ 材料代码 Material Code
- ④ 标称电感量：1R0 表示 1.0 μ H
- ⑤ 公差：K 表示 $\pm 10\%$ ，M 表示 $\pm 20\%$ ，N 表示 $\pm 30\%$

规格特性 SPECIFICATIONS

GDSPLS 0806 系列

Part Number 型号	Inductance 电感量	DC Resistance 直流电阻	Temperature Rise Current 温升电流	Saturation Current 饱和电流
Units 单位	μ H	m Ω (Max)	A	A
Symbol 符号	L	DCR	I _{rms}	I _{sat}
GDSPLS0806MN-1R0M	1.10 \pm 20%	4.80	15.0	15.0
GDSPLS0806MN-2R2M	2.20 \pm 20%	5.50	14.0	8.0
GDSPLS0806MN-3R3M	3.30 \pm 20%	7.50	8.0	6.0
GDSPLS0806MN-6R8M	6.80 \pm 20%	23.50	5.0	4.0

GDSPLS 0807 系列

Part Number 型号	Inductance 电感量	DC Resistance 直流电阻	Temperature Rise Current 温升电流	Saturation Current 饱和电流
Units 单位	μ H	m Ω (Max)	A	A
Symbol 符号	L	DCR	I _{rms}	I _{sat}
GDSPLS0807MN-R47M	0.47 \pm 20%	3.10	15.0	25.0
GDSPLS0807MN-R56M	0.56 \pm 20%	3.10	15.0	20.0
GDSPLS0807MN-R68M	0.68 \pm 20%	3.10	15.0	17.0
GDSPLS0807MN-R82M	0.82 \pm 20%	4.00	17.0	15.0
GDSPLS0807MN-1R0M	1.00 \pm 20%	4.30	13.0	15.0
GDSPLS0807MN-1R5M	1.50 \pm 20%	5.60	10.0	11.0
GDSPLS0807MN-2R2M	2.20 \pm 20%	6.20	10.0	8.0
GDSPLS0807MN-3R3M	3.30 \pm 20%	9.00	8.0	5.0
GDSPLS0807MN-4R7M	4.70 \pm 20%	13.50	6.0	5.0
GDSPLS0807MN-6R8M	6.80 \pm 20%	24.00	5.0	4.0
GDSPLS0807MN-100M	10.00 \pm 20%	41.00	3.0	3.0

GDSPLS 1009 系列

Part Number 型号	Inductance 电感量	DC Resistance 直流电阻	Temperature Rise Current 温升电流	Saturation Current 饱和电流
Units 单位	μ H	m Ω (Max)	A	A
Symbol 符号	L	DCR	I _{rms}	I _{sat}
GDSPLS1009MN-R22M	0.22 \pm 20%	1.60	22.0	55.0
GDSPLS1009MN-R33M	0.33 \pm 20%	1.60	22.0	42.0
GDSPLS1009MN-R47M	0.47 \pm 20%	1.85	20.0	36.0
GDSPLS1009MN-R56M	0.56 \pm 20%	1.85	20.0	32.0



GDSPLS 1009 系列

Part Number 型号	Inductance 电感量	DC Resistance 直流电阻	Temperature Rise Current 温升电流	Saturation Current 饱和电流
Units 单位	μ H	m Ω (Max)	A	A
Symbol 符号	L	DCR	I _{rms}	I _{sat}
GDSPLS1009MN-R68M	0.68 \pm 20%	2.65	17.0	28.0
GDSPLS1009MN-R82M	0.82 \pm 20%	2.65	17.0	24.0
GDSPLS1009MN-1R0M	1.00 \pm 20%	2.65	17.0	21.0
GDSPLS1009MN-1R5M	1.50 \pm 20%	4.00	13.5	14.0
GDSPLS1009MN-2R2M	2.20 \pm 20%	4.80	12.0	14.0
GDSPLS1009MN-3R3M	3.30 \pm 20%	7.15	11.0	10.0
GDSPLS1009MN-4R7M	4.70 \pm 20%	9.80	10.0	8.5
GDSPLS1009MN-6R8M	6.80 \pm 20%	15.00	9.0	7.0
GDSPLS1009MN-8R2M	8.20 \pm 20%	15.00	9.0	6.0
GDSPLS1009MN-100M	10.00 \pm 20%	21.30	7.0	5.0

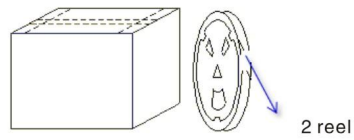
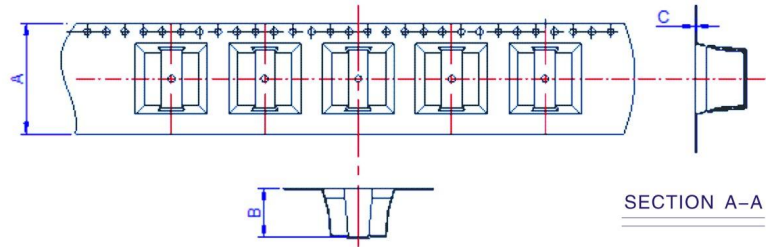
GDSPLS 1210 系列

Part Number 型号	Inductance 电感量	DC Resistance 直流电阻	Temperature Rise Current 温升电流	Saturation Current 饱和电流
Units 单位	μ H	m Ω (Max)	A	A
Symbol 符号	L	DCR	I _{rms}	I _{sat}
GDSPLS1210MN-R22M	0.22 \pm 20%	1.50	37.0	55.0
GDSPLS1210MN-R33M	0.33 \pm 20%	1.50	37.0	45.0
GDSPLS1210MN-R47M	0.47 \pm 20%	1.85	35.0	43.0
GDSPLS1210MN-R68M	0.68 \pm 20%	1.85	35.0	33.0
GDSPLS1210MN-R82M	0.82 \pm 20%	2.50	30.0	31.0
GDSPLS1210MN-1R0M	1.00 \pm 20%	2.50	30.0	28.0
GDSPLS1210MN-1R5M	1.50 \pm 20%	3.50	25.0	24.0
GDSPLS1210MN-2R2M	2.20 \pm 20%	4.30	21.0	18.0
GDSPLS1210MN-3R3M	3.30 \pm 20%	5.70	15.0	14.0
GDSPLS1210MN-4R7M	4.70 \pm 20%	7.90	12.0	11.0
GDSPLS1210MN-6R8M	6.80 \pm 20%	11.00	10.0	9.0
GDSPLS1210MN-8R2M	8.20 \pm 20%	11.80	9.0	7.0
GDSPLS1210MN-100M	10.00 \pm 20%	16.70	8.0	6.0

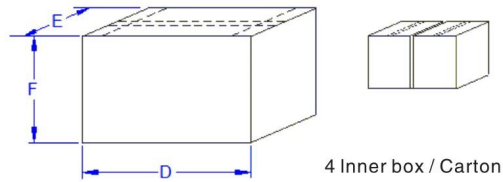
Note:

1. Inductance: 100KHz, 1.0Vrms at 25 °C ambient.
2. DC Resistance: at 25 °C ambient.
3. Temperature Rise Current: DC current for an approximate temperature rise of 40 °C without core loss.
4. Saturation current: DC current for approximately 20% rolloff at 25 °C ambient.

包装规格 PACKAGING DIMENSIONS



2 reel / inner box



Series	Plate			Carton			Quantity
	A	B	C	D	E	F	Pcs
GDSPLS0806	24	7	0.4	368	368	310	4,000
GDSPLS0807	24	7	0.4	368	368	310	4,000
GDSPLS1009	24	10.2	0.4	368	368	310	3,200
GDSPLS1210	24	10.2	0.4	368	368	310	2,400